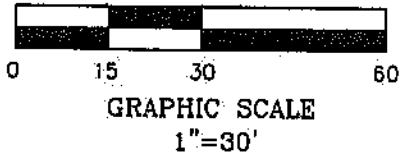
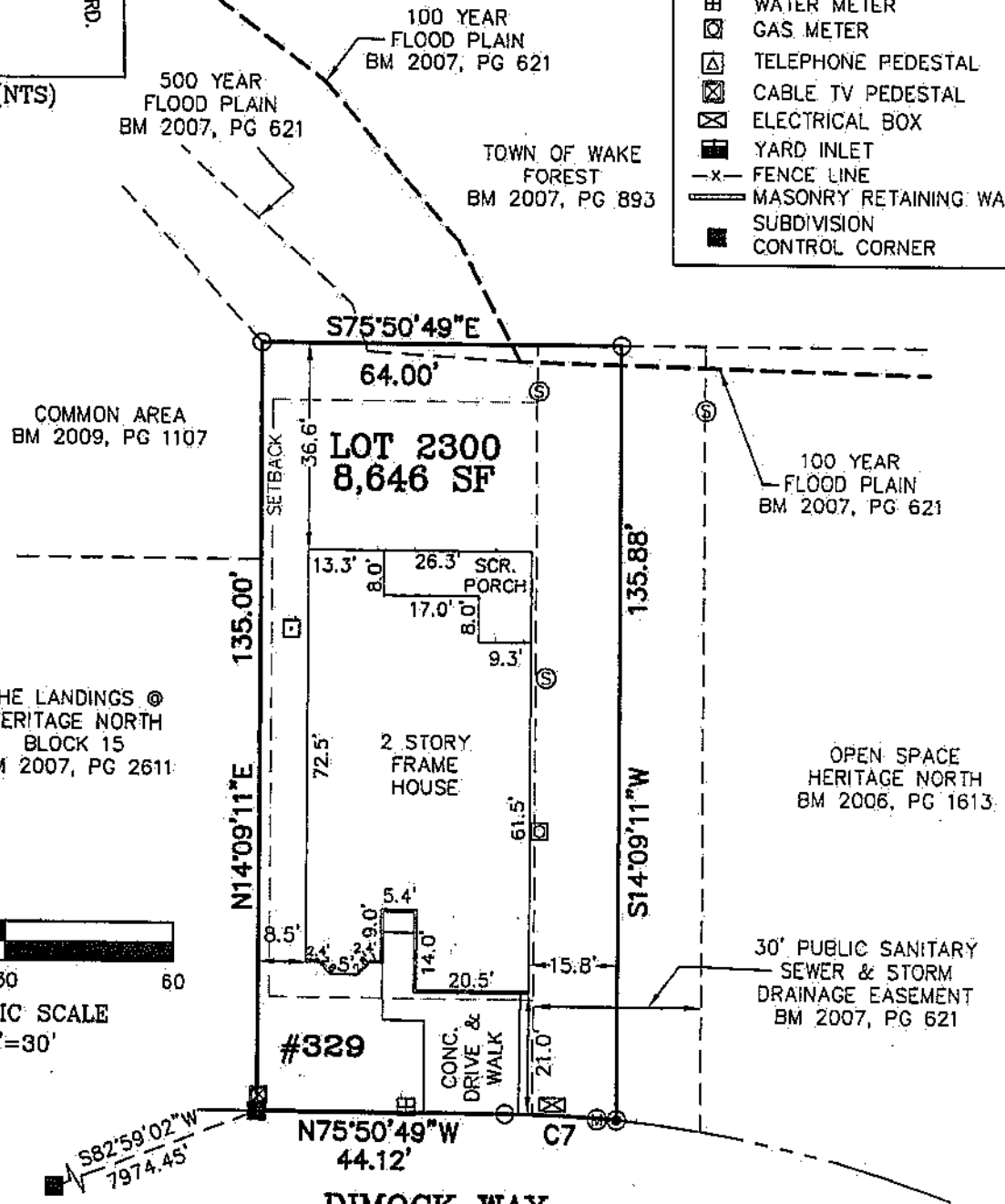
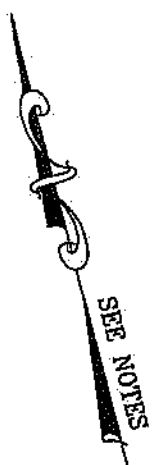


SPECIAL FLOODPLAIN NOTE:
 THE 100 YEAR FLOODPLAIN ON LOTS 2300, 2303, 2304, 2305, 2306, 2307, 2308, 2309, & 2310 HAS BEEN RELOCATED PER THE LOMR-F APPROVED BY FEMA APPROVAL #07-04-0247A. BECAUSE THIS AREA HAS NOT BEEN MODELED AND THE ASSOCIATED 500 YEAR FLOODPLAIN CANNOT BE DETERMINED AND HAS BEEN REMOVED FROM THESE LOTS DUE TO ITS INACCURACY. PLEASE NOTE: THE 500 YEAR FLOODPLAIN IS NOT USED FOR INSURANCE PURPOSES. BM 2007, PG 621

LEGEND

- IRON PIN, EXISTING
- IRON PIN, SET
- △ MATHEMATICAL POINT
- ⊕ FIRE HYDRANT
- ⊙ LIGHT POLE
- ⊙ SEWER CLEAN OUT
- ⊠ A/C UNIT
- ⊠ WATER METER
- ⊠ GAS METER
- ⊠ TELEPHONE PEDESTAL
- ⊠ CABLE TV PEDESTAL
- ⊠ ELECTRICAL BOX
- ⊠ YARD INLET
- x- FENCE LINE
- ▬ MASONRY RETAINING WALL
- ▬ SUBDIVISION
- CONTROL CORNER



NOTE:
 -REFERENCE BM 2007 PG 621 FOR BOUNDARY INFORMATION, NORTH INDEX & TIE LINES TO SUBDIVISION CONTROL CORNERS.
 -ZONING: C.U. R-5
 -SETBACK: FRONT YARD-20'
 CORNER YARD-20'
 REAR YARD-10', SIDE AGGREGATE-16'
 MIN. SIDE YARD - 2'
 -LOT SUBJECT TO A 5' UTILITY EASEMENT ENVELOPE PER BM 2007 PG 621
 -BUILDING DIMENSIONS & TIES ARE TO EXTERIOR

CURVE TABLE				
CURVE	LENGTH	RADIUS	CHORD	CH. BRG.
C7	19.91'	225.00'	19.90'	N73°18'43"W