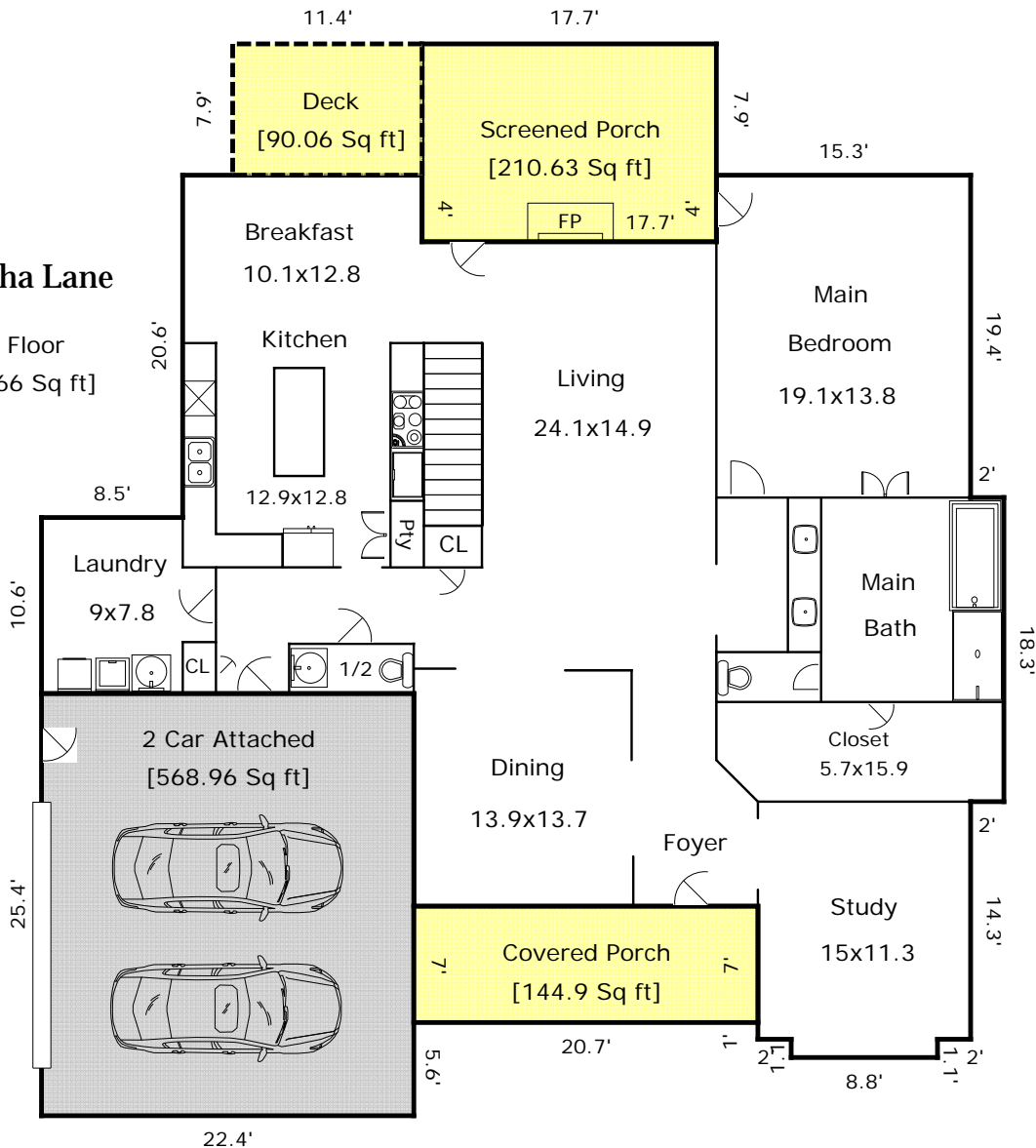
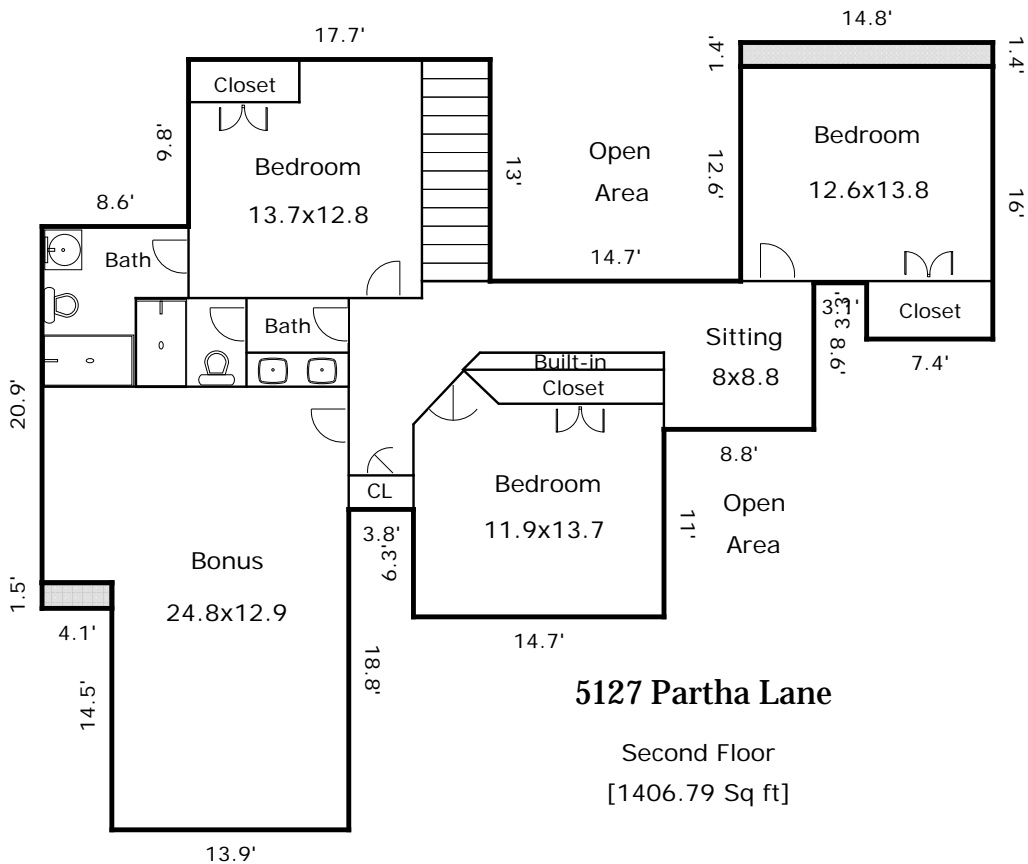


5127 Partha Lane

First Floor
[2075.66 Sq ft]





5127 Partha Lane

Second Floor
[1406.79 Sq ft]

Living Area		Calculation Details	
First Floor	2075.66 Sq ft	8.8×1.1	= 9.68
		18.3×2	= 36.6
		10.6×8.5	= 90.1
		12.8×8	= 102.4
		31.2×13.9	= 433.68
		33.5×40	= 1340
		15.3×4	= 61.2
		4×0.5	= 2
Second Floor	1406.79 Sq ft	17.7×9.8	= 173.46
		14.8×12.6	= 186.48
		26.3×3.2	= 84.16
		55.8×0.1	= 5.58
		7.4×3.3	= 24.42
		45.3×8.6	= 389.58
		36.5×4.7	= 171.55
		14.7×6.3	= 92.61
		18×4.3	= 77.4
		13.9×14.5	= 201.55
Total Living Area (Rounded):		3482 Sq ft	
Non-living Area			
Deck	90.06 Sq ft	7.9×11.4	= 90.06
Covered Porch	144.9 Sq ft	7×20.7	= 144.9
Screened Porch	210.63 Sq ft	17.7×11.9	= 210.63
2 Car Attached	568.96 Sq ft	25.4×22.4	= 568.96
Non-Living Area	6.15 Sq ft	1.5×4.1	= 6.15
Non-Living Area	20.72 Sq ft	14.8×1.4	= 20.72